

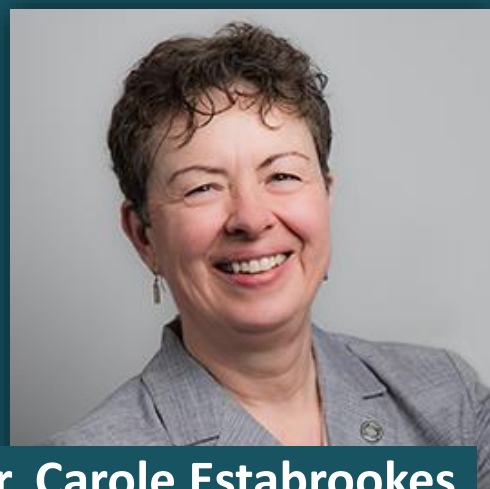


# CanSPARK LTC

Canada Supporting Partnerships to Advance  
caRe and Knowledge in Long-Term Care



Dr. Paul Hebert



Dr. Carole Estabrookes



Dr. Andrew Costa



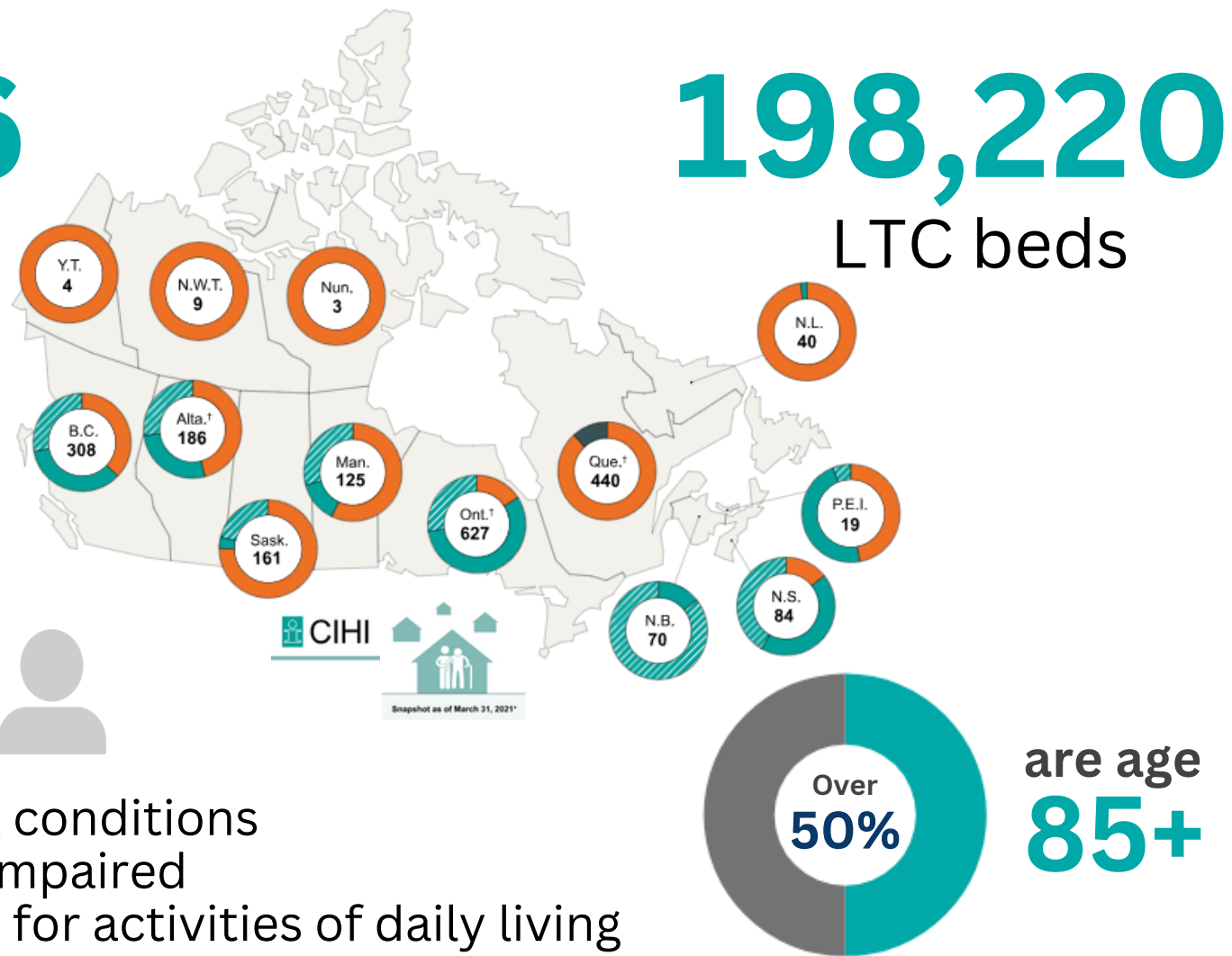


# Why we need a Research Network for Long-Term Care?

A Snapshot of Long-Term Care & the Aging Population in Canada

**2,076**

LTC homes



- Have 3+ medical conditions
- Are cognitively impaired
- Require support for activities of daily living

**6,835,866**

Canadians Age 65+

**65+**

19% - 24%



65+ Alzheimer's disease

**85+**

2.3% - 7%

aging increase  
population % by 2045



85+ Alzheimer's disease

\*Canadian Institute for Health Information. Long-term care homes in Canada: How many and who owns them?

"The COVID-19 pandemic shone a light on the problems in LTC and highlighted long-standing, and systemic challenges in infection prevention and control, staffing, infrastructure, and quality of care in LTC across Canada."

Health Canada, News Release, March 1, 2023

# Major barriers and facilitators to research in LTC

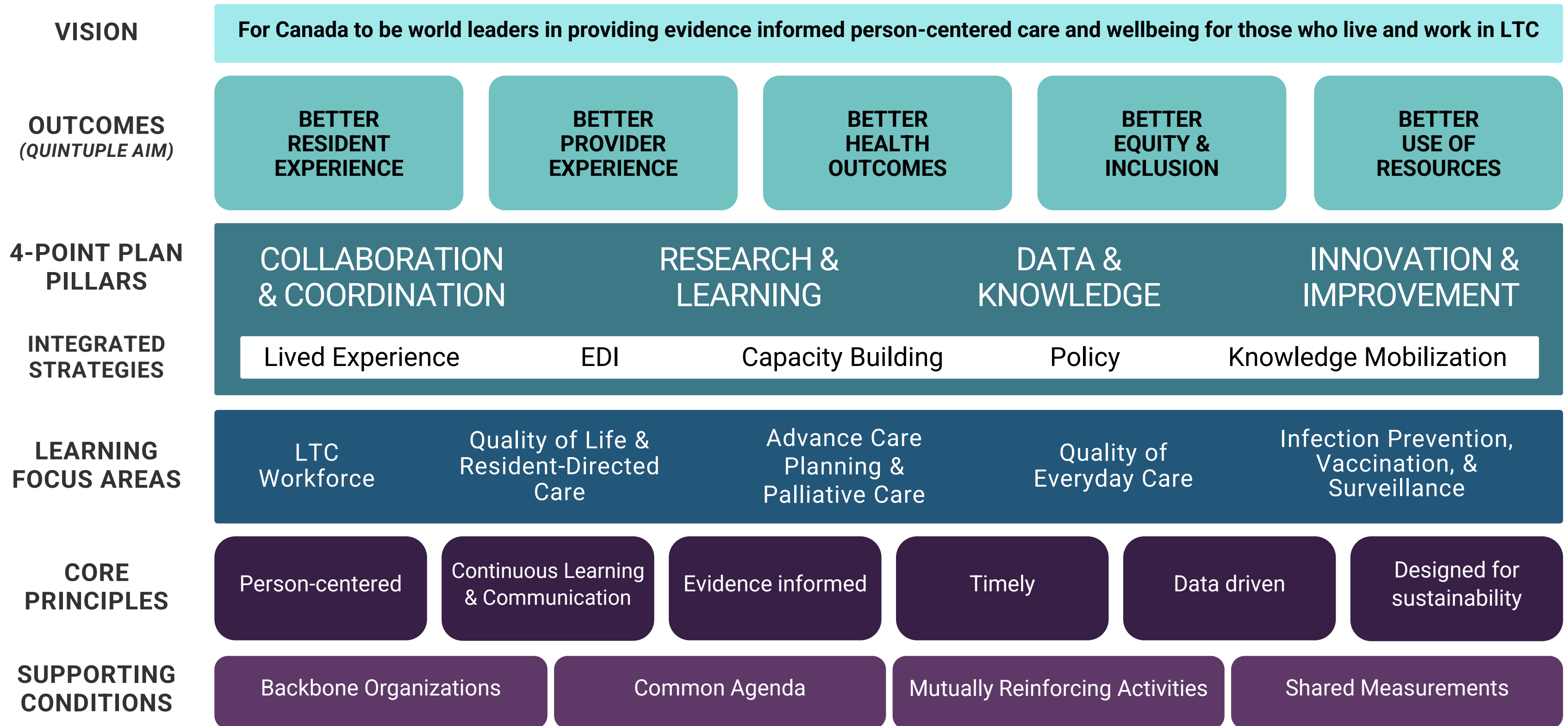
## BARRIERS

- Minimal LTC interventional trials: only 42 started and 24 completed since 2000
- Limited evidence and data to support sector specific concerns
- Few academics interested in LTC research many with limited RCT experience
- Limited infrastructure to support research
- Limited ongoing training and significant workload for front line care providers
  - Highly regulated and under resourced sector

## FACILITATORS

- One other national network funded by NIH (one of our collaborators)
- Standardized data acquisition Canada wide
- Major investments by Federal and Provincial Ministries of Health
- Uniform data standards and data strategies facilitating platform trials
- Development of Provincial hubs to assist intervention implementation

# What is the CanSPARK LTC Big Picture Network Structure



# What are some of the projects and programs being developed?

## Themes of Work



LTC Workforce Wellbeing & Quality Of Life



Quality Of Life & Person-Centred Care



Advanced Care Planning & Palliative Care



Quality Of Every Day Care



Infection Prevention, Vaccination, & Surveillance

## Examples of studies being designed

- Understanding relationship between workforce policies and quality of care
- Determining whether existing supports for LTC to decrease ED visits
- What is the best approach to promoting sleep in LTC
- Currently designing cluster RSV vaccines trial



# How will we work together & with whom?

- Ongoing engagement & partnership development through broad CanSPARK LTC initiative
- Co-developing engagement plans for EDI/anti-hate & respect for indigenous self-determination
- Establishing regular network meetings & capacity building sessions
- Establishing formal internal review process
- Current ACT Network partnerships: PCPCRC, CCCTG & Ottawa Method Centre.



\*The logos represented on this page represent the range of organizations being engaged and consulted in the development of this learning health system and should not be interpreted as official participation or endorsement.



# Who are some of our Research Network early members?

 <b>Dr. Paul Hebert</b> Ontario Network co-lead	 <b>Dr. Carole Estabrookes</b> Alberta Network co-lead	 <b>Dr. Andrew Costa</b> Ontario Network co-lead LTC Workforce co-lead	 <b>Dr. Kumanan Wilson</b> Ontario Executive member	 <b>Natasha Poushinsky</b> Ontario Executive member
 <b>Dr. Janice Keefe</b> Nova Scotia Advanced Care planning & Palliative Care Co-lead	 <b>Dr. Emily MacDonald</b> Quebec Quality of Everyday Care co-lead	 <b>Julie Weir</b> New Brunswick Infection Prevention, Vaccination, & Surveillance co-lead	 <b>Dr. Arthur Sweetman</b> Ontario Network Member	 <b>Dr. Vivian Welch</b> Ontario Executive member
 <b>Dr. James Downar</b> Ontario Advanced Care planning & Palliative Care Co-lead	 <b>Dr. Mark Loeb</b> Ontario Infection Prevention, Vaccination, & Surveillance co-lead	 <b>Dr. George Heckman</b> Ontario Quality of Everyday Care co-lead	 <b>Dr. Monica Taljaard</b> Ontario Executive member	 <b>Dr. Colleen Webber</b> Ontario Network Member
 <b>Dr. Kelli Stajduhar</b> British Columbia Advanced Care planning & Palliative Care Co-lead	 <b>Dr. Ted McDonald</b> New Brunswick LTC Workforce co-lead	 <b>Dr. Dawn Bowdish</b> Ontario Infection Prevention, Vaccination, & Surveillance co-lead	 <b>Dr. Nathan Stall</b> Ontario Executive member	 <b>Julie Lapenskie</b> Ontario Network Member
 <b>Dr. Annie Robitaille</b> ONTARIO QUALITY OF LIFE & PERSON CENTERED CARE CO-LEAD	 <b>Dr. John Hirdes</b> Ontario Quality of Life & Person Centered Care co-lead	 <b>Dr. Benoît Robert</b> Ontario Quality of Everyday Care co-lead	 <b>Dr. Samir Sinha</b> Ontario Executive member	 <b>Jenna Naylor</b> Alberta Network Member



# Question Period

## CanSpark LTC: Canada Supporting Partnerships to Advance caRe and Knowledge in Long-Term Care

*Dr. Paul Hebert*

**02:00**

